

**L'HÔPITAL DE MONTRÉAL POUR ENFANTS / THE MONTREAL CHILDREN'S HOSPITAL**

Services pédiatriques du développement et du comportement

Developmental and Behavioral Pediatrics Services

**Audiologie / Audiology**

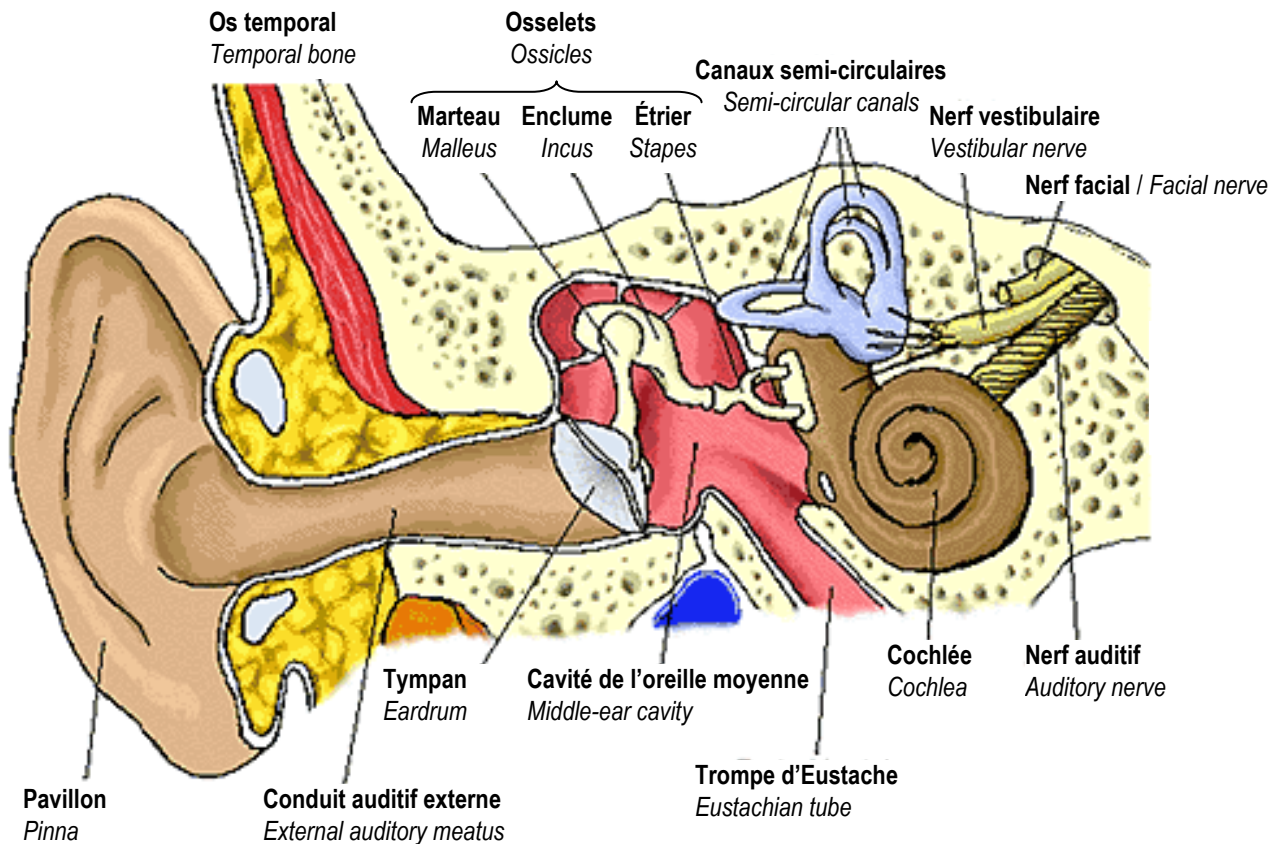
1001 Boul. Décarie, Montréal, Québec H4A 3J1

(514) 412-4454 FAX : (514) 412-4367

## Annonce de diagnostic d'une perte auditive *Newly Diagnosed Hearing Loss*

### Comment entendons-nous ?

*How do we hear?*



### Types de perte auditive

*Types of hearing loss*

Neurosensorielle / Sensorineural

Conductive

Mixte / Mixed

## Protocole médical : investigation de l'étiologie de la perte auditive

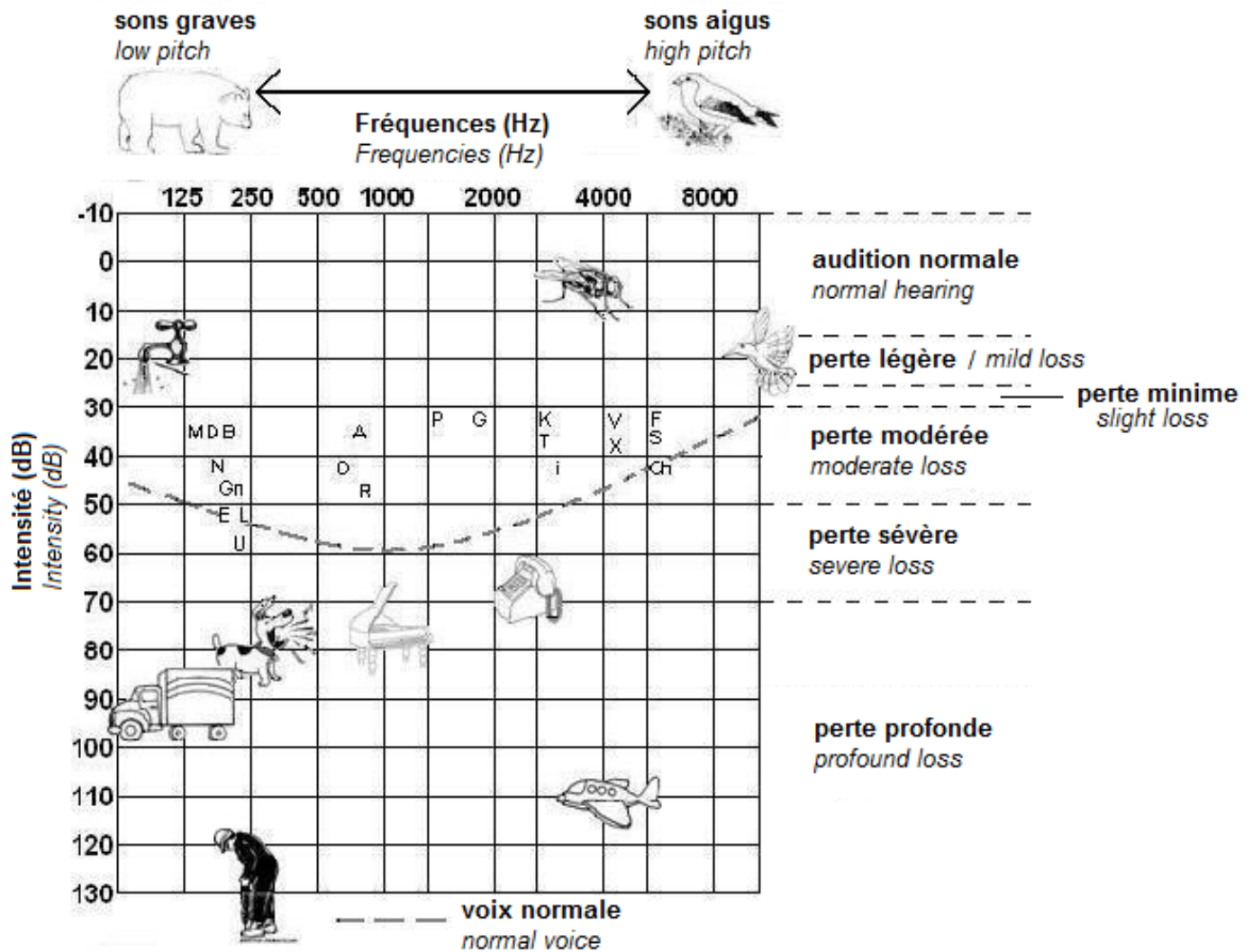
*Medical protocol: Hearing loss etiology investigation*

### Consultation:

- **ORL / ENT**
  - o CT-Scan
- **Génétique / Genetics**
- **Ophthalmologie / Ophthalmology**

## Degré de la perte auditive

Hearing loss degree



Northern and Downs (2014) pour enfant 2-18 ans / for children 2-18 years of age